



Year 1

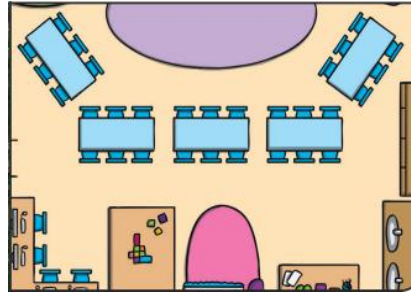
Geography

The Gruffalo

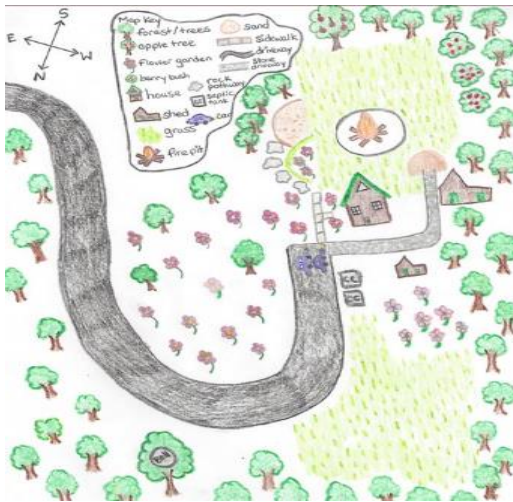
Can I see St Mary's school on an aerial photograph?



an aerial photograph

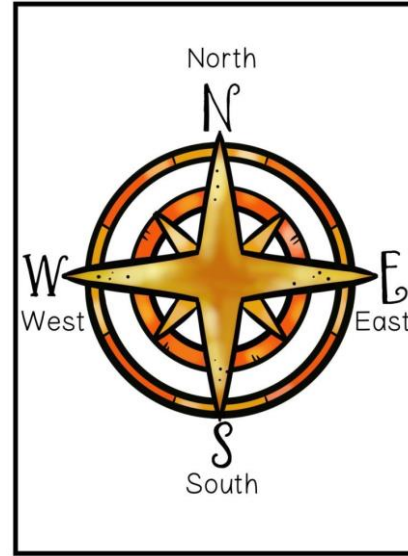


an aerial plan



Can I create a map of the school grounds?

Can I devise a simple key to explain it?



A compass can be used to help you find your way. It shows four directions – north, south, east and west. It is very useful for people navigating things like ships and aeroplanes.

Vocabulary

- local area
- map
- address
- observe
- passport
- distance
- aerial view
- (birds eye view)
- fieldwork
- route

An **address** needs to be written in a certain way so it gets to the right place.

- Name of school → **St Mary's Primary School,**
- Building number and road → **Old Road,**
- Town, village or area → **Writhlington,**
- City → **Radstock,**
- County → **Somerset.**
- Postcode → **BA33NG**